

BLIZ ROUND



- Ceiling and wall mount series. Fixtures consist of:
- Multi-step powder-coat painting process, optimized against UV rays and corrosion.
 - Copper-free precision die-cast aluminum housing and ring/faceplate.
 - High transmittance, internally coated, soda-lime pressed glass diffuser, thermally and chemically quenched to strengthen the impact resistance and reduce the effect of rapid temperature changes.
 - Custom molded, anti-aging gasket(s).
 - Stainless steel external hardware.
 - Custom MCPCB utilized to maximize heat dissipation and promote a long LED life.
 - 100% uniform diffused light emission.
 - Input voltage: 120-277 V (50 / 60 Hz), integral 0-10 V dimming driver.

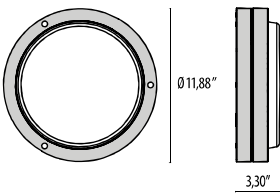
- Optional, integral, high-frequency motion-sensor operating at a frequency of 5.8 GHz +/- 75 MHz (HF versions).
- Optional, integral, emergency battery-pack designed for a minimum operation of 90 minutes (EMPK versions).
- Consult factory for dimming options, custom finishes, and non-cataloged CCT (Kelvin) options.
- Product meets Buy American Act requirements within ARRA.
- 5-year warranty on components.
- 10-year warranty on glass.
- Marine Grade finish.
- Suitable for Natatorium applications.



FINISHES

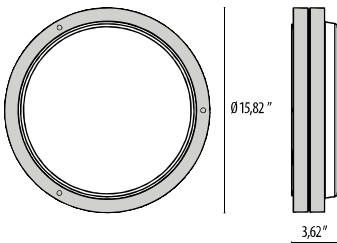
- AN-96 / Iron gray / Textured
- GR-94 / Aluminum metallic / Textured
- WH-87 / White / Textured
- BK-81 / Black / Textured
- RB-10 / Iron rust / Textured

12"



BLIZ ROUND
30

16"



BLIZ ROUND
40

Scan here
for installation
instructions



Lumen Output	2700K	3000K	3500K	4000K
BLIZ 30 – 10W (min)	689	716	743	770
BLIZ 30 – 20W	1377	1431	1485	1540
BLIZ 30 – 30W (max)	2096	2178	2260	2343
BLIZ 40 – 10W (min)	663	685	707	728
BLIZ 40 – 20W	1326	1370	1413	1456
BLIZ 40 – 30W	1989	2054	2120	2184
BLIZ 40 – 40W (max)	2652	2739	2826	2912

TRIM OPTIONS

Contact Factory for MOQ- Some options may require reduced wattage



STANDARD TRIM



EYELID TRIM



CROSS TRIM



VISA TRIM

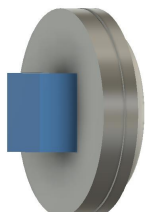
Order Guide - Bliz Round

Order code example

BRD-30-AM-3K-277-NA-H/L-STANDARD

BRD-

Housing Style	Wattage	Finish	Color Temperature	Voltage	Controls	Accessories	Optional Trim
30 Round 12"	10 10 watt	AM Aluminum Metallic	27K 2700k	UNV 120-277V	NA Non Dimming	EMPK Emergency Battery back up	(See pictures above) Contact Factory for MOQ
40 Round 16"	20 20 watt	IG Iron Gray	3K 3000k		0-10V 0-10V Dimming	CWEMPK Cold Weather Emergency Battery back up (-4°F - 122°F)	Standard Trim
	30 30 watt (Bliz 30 MAX)	IR Iron Rust	35K 3500k		ELV ELV Dimming	HF High Frequency Occupancy Sensor w/ daylight PHC	Eyelid Trim (15W Max)
	40 40 watt (Bliz 40 MAX)	BK Textured Black	4K 4000k		1% 1% Dimming		Cross Trim
	XX Specify Wattage must be below max	WH Textured White	RGBW* RGBW				Visa Trim (15W Max)
		CC Custom Color					CON2 (double-gang j-box, adaptor plate and 1/2" knockouts)
			*See below for details				CON4 (double-gang j-box, adaptor plate and 3/4" knockouts)
							TP Tamper Proof hardware



Fixture shown with CON2/CON4 option colored for contrast

REMOTE RGBW ACCESSORIES

Power Supply



17433
Kit driver 48V



17096
Kit driver 48V WP

RF Controls



3104173
RGBW RF controller 4 channel
(0.35A each CH)



31041730
RGBW RF controller WP 4 channel
(0.35A each CH)



310429
RGBW hand held remote

DMX Controls



178973
RGBW DMX enabler/decoder 4
channel (0.35A each CH)



1789730
RGBW DMX enabler/decoder WP 4
channel (0.35A each CH)



11015
Terminating Resistor



110150
Terminating Resistor WP

Revision 14
03/24